

CERTIFICATE OF LOCATION OF GOVERNMENT CORNER

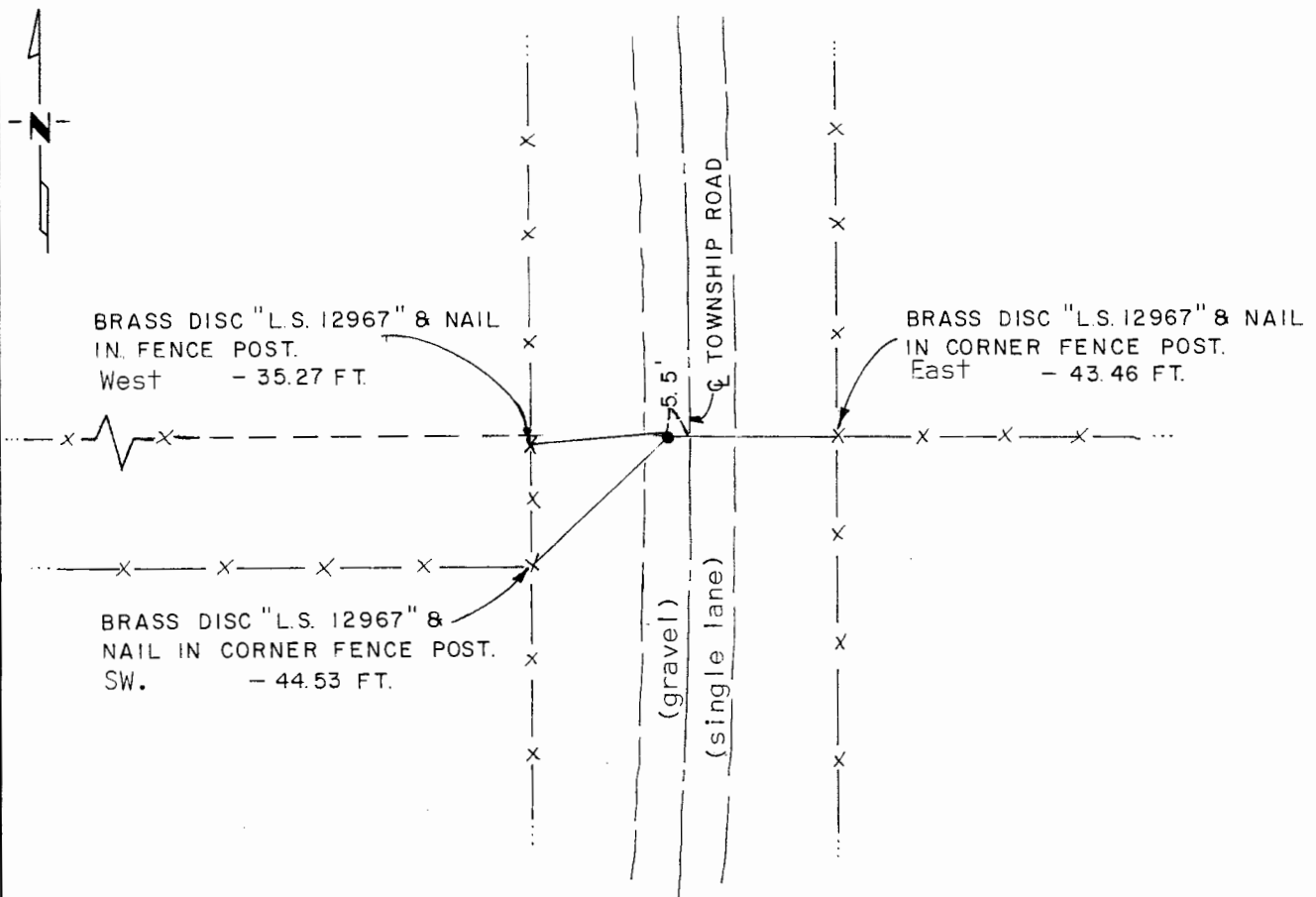
West Quarter _____ Corner of Section 7, Township 108 N., Range 40 W., 5th P.M.

STATE OF MINNESOTA, County of Murray

At the corner location shown on the sketch:

- On Sept. 22, 1980 found a stone above grade over old bolt; removed stone in order to place iron reinforcing bar over bolt.
DATE
 - left monument as found, lowered monument, removed monument (explain)
- On Sept. 22, 1980 placed a 1/2" x 10" iron reinforcing bar with "L.S. 12967" cap over said bolt.
DATE

SKETCH OF REFERENCE TIES



I hereby certify that this document and the data contained herein was prepared by me or under my direct supervision.

Way D. [Signature] 12/25/81
SIGNATURE DATE

Registration No. 12967

Land Surveyor, Professional Engineer

County Surveyor, County Engineer

OFFICE OF THE COUNTY RECORDER

County of MURRAY

I hereby certify that this document was filed in the Co. Recorders office at 10 A.M. on the 18th day of February A.D., 1982

County Recorder *Willard W. Ohme*

By _____, Deputy

DOCUMENT NO. _____